



## YK 450

|                    |                                    |
|--------------------|------------------------------------|
| Cooling Capacity   | 40 - 45 kW *                       |
| Heating Capacity   | 55000 kcal/h (Optional)**          |
| Fresh Air          | %0 - %30 (Optional)***             |
| Air Flow           | 12000 m <sup>3</sup> /h            |
| Performance Limit  | 45 C° (Outside Temperature)        |
| Operating Current  | 105 A @24 VDC                      |
| Outside Dimensions | 2120 / 2020 / 1920 * 2885 * 290 mm |
| Unit Weight        | 250 kg****                         |
| Refrigerant        | R134a                              |

### ECE R10 Certificate

Electromagnetic compatibility approval

\* Cooling capacity varies according to the compressor selected for installation.

\*\* Heating feature is optional. It is applied by passing the heating water of your vehicle through the air conditioner.

\*\*\* Fresh air feature is optional. It is applied with a flap integrated into your air conditioner.

\*\*\*\* Mounting kit weight not included.



2.1 inch LCD screen

Effective **temperature and air speed** control

**Heating and cooling** together

**Inside and outside** ambient temperature display

**FUNCTIONAL AND CLIMATRONIC CONTROL**

## Lines Compatible with Your Bus

Yilkar bus air conditioners provide an integrity in harmony with your vehicle with long lines.

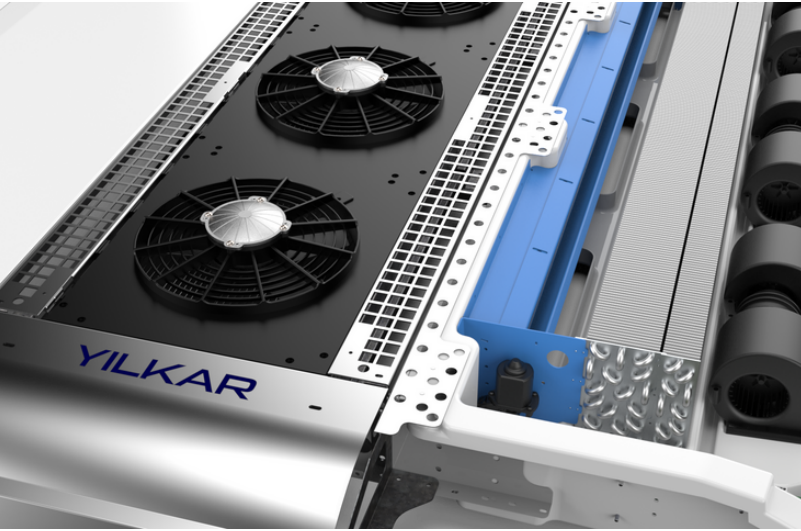


## Effective System Performance Control

The efficiency of fluid control determines the quality of your air conditioner

Fluid control protects your compressor by adapting your air conditioner to variable ambient parameters, keeping its performance at the highest level at all times.

Automatic condenser temperature control and compressor pressure protection are standard in all Yilkar air conditioners.



## Fresh Air Flap (Optional)

Improve the air quality in your vehicle

With the fresh air flap (in blue color) that can be added to the air conditioning unit, it provides 50% fresh air to your vehicle while the air conditioner is running.

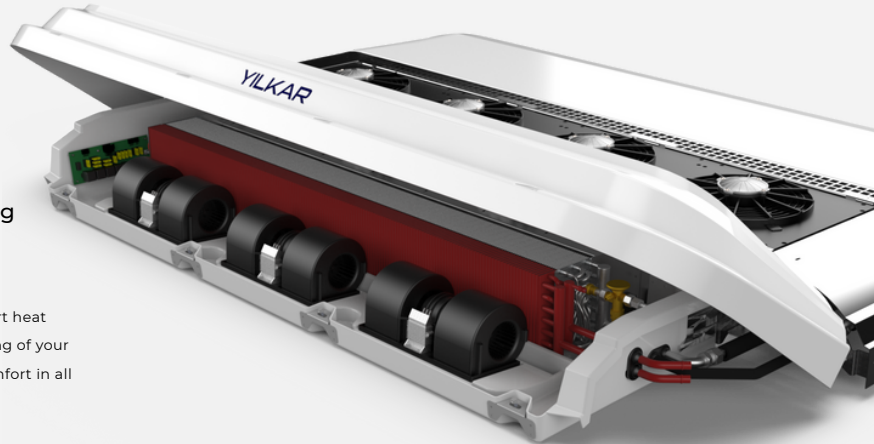
This filtered air entering your vehicle is delivered to your vehicle at the desired temperature after passing through our air conditioning terminal. In this way, air quality is optimized as well as thermal comfort in your passengers' environment.

## Heating (Optional)

Add a heating function to your air conditioner besides cooling

The heat exchanger (in red) is added to the device content to gain a heating function.

Yilkar can add heating power to your air conditioner with its design that makes the inert heat generated in your engine usable for air conditioning your vehicle. In this way, the cooling of your engine will be more effective and your vehicle will warm up. Your passengers enjoy comfort in all seasons.



211.05.KTLG0.09