



New!

YK 90 S

Cooling Capacity	6 - 9 kW *
Air Flow	2400 m ³ /h
Performance Limit	45 C° (Outside Temperature)
Operating Current	36 A @12 VDC - 18 A @24 VDC
Inside Dimensions	952*420*222 mm
Outside Dimensions	1200 *1200* 190 mm
Unit Weight	32,5 kg ***
Refrigerant	R134a

ECE R10 Certificate

Electromagnetic compatibility approval

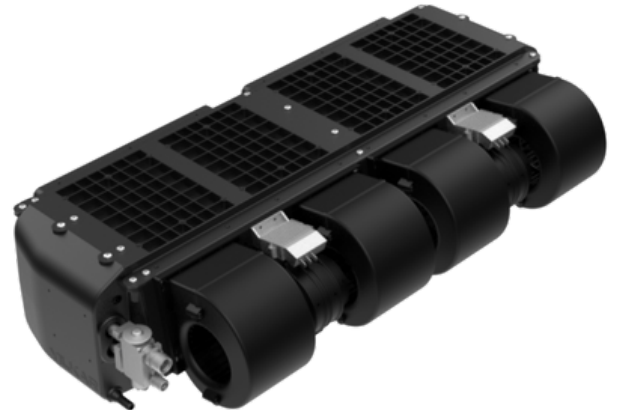
NEW GENERATION FEATURES

- %15 weight savings with **functionally connected and lightweight design**
- Optimized** heat exchangers %12 more efficient heat transfer
- Improved **airflow** profile
- Integrated **heating system**
- 3 level** ventilation speed

Cooling Capacity
@3000 rpm @35 C outside temperature

Compressor

SD5	6 kW max.
SD7 - TM 16	9,0 kW max.



- 2.1 inch LCD screen
- Effective **temperature and air speed** control
- Heating and cooling** together
- Inside and outside** ambient temperature display

FUNCTIONAL AND CLIMATRONIC CONTROL

* The cooling capacity varies according to the compressor selected for installation.

** Heating feature is optional. It is carried out by passing the heating water of your vehicle through the air conditioner.

*** Mounting kit weight not included.